

**MINERAL WOOL:** (3" MIN), 3 1/2", R15, 2.5#, UL, UNFACED, INFILLING BACK CAVITY IF 2HR ASSEMBLY OR IF SUPER-INSULATE.

**ccSPF:** 3 5/8" CLOSED-CELL SPRAY FOAM, FS25, 2#, HFO, <1GWP, R24, CONT & TOTAL INSULATION & AIR BARRIER & CLASS 2 VAPOR RETARDER (BI-DIRECTIONAL), ABAA COMPLIANT, APPLY 2-PASSES TO FILL OUTWARD OF STUD & ENCAPSULATE BACK-FURRING.

**ccSPF:** FILL STUD FLANGE @ PERIMETER & OPENINGS UNLESS MW BACKING.

**VERT STUD:** 6" X 2"W FLANGE, 18GA TYP, 20GA MIN, G60, 24"OC TYP, 16"OC IF RATED.

**Z-BACK™ HORIZONTAL BACK FURRING:** 1 3/4" x (1"MIN TO 2 1/2"MAX) x 1 3/4" CFMF, 18GA (20GA MIN), GAL, 16"OC TYP (24"OC MAX), (1) 1 1/4" #12 HEX/WASHER GALV OR STSTL FASTENERS PER STUD.

**T-PAD™ THERMAL BREAK:** HD URETHANE, R1.55, 2"(N) X 1/2" X CONTINUOUS OR 6" PADS. ORIENT VERT OR HOR. TEMP SECURE W/ SPRAY ADHESIVE. LOCATE TO SUPPORT EACH INTERSECTION.

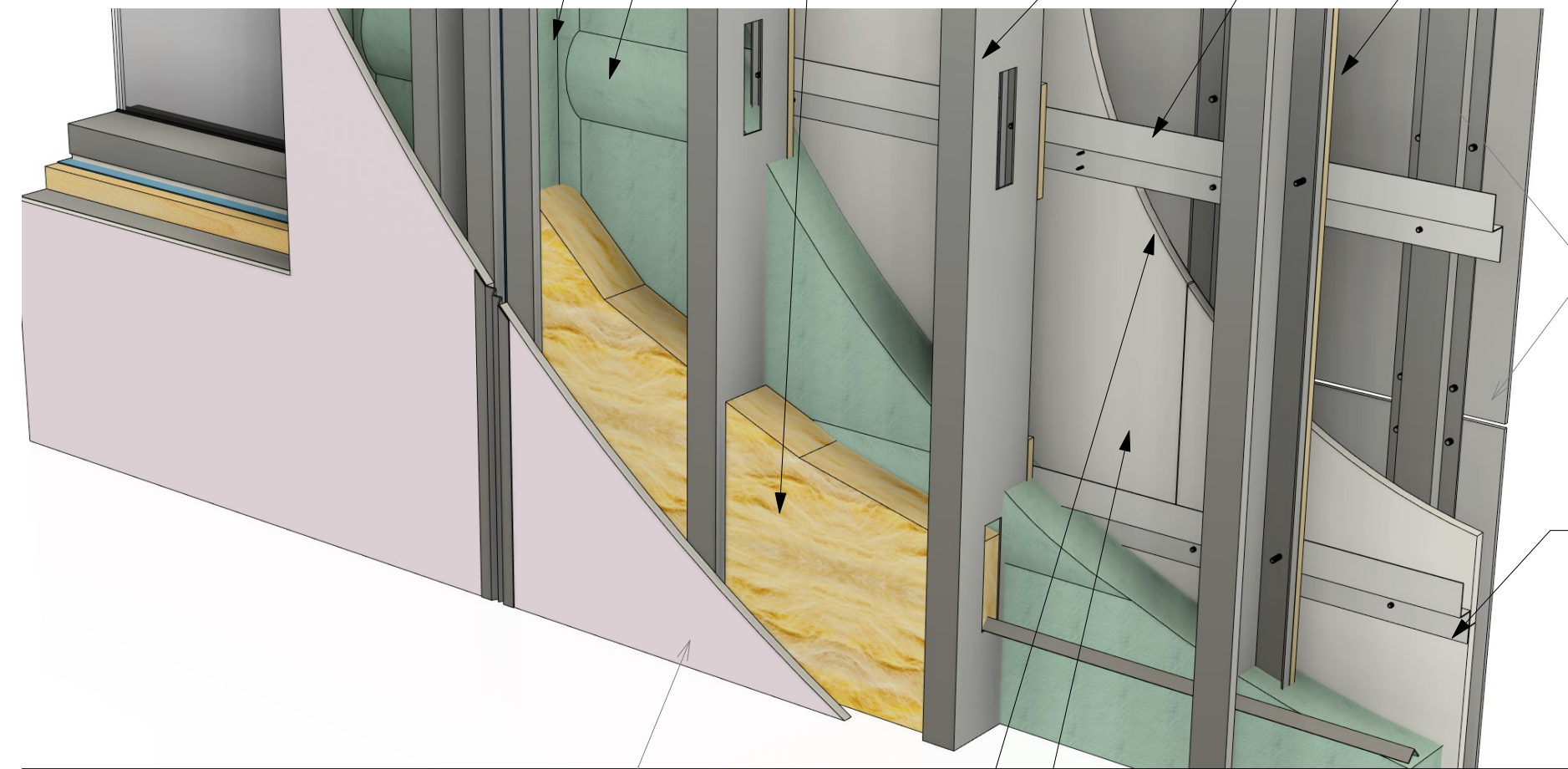
EXTERIOR LIGHTWEIGHT NON-COMBUSTIBLE CLADDING & CLADDING TRACKS PER NFPA 285. (BY OTHERS)

CENTER SHEATHING JOINT ON BACK-FURRING FLANGE, 1/2" FASTENER EDGE SETBACK.

**GLASS-MAT SHEATHING:** 5/8", UL, FASTEN 8" PERIMETER & 12" FIELD. 1-LAYER TYP, 2-LAYER PER FIRE ASSEMBLY. APPLIED HORIZONTALLY IF FIRE RATED.

**AIR & WEATHER-BARRIER, VAPOR PERMEABLE:** BOARD, SELF-ADHERED OR FLUID-APPLIED, PERMEABLE >10PERM, CLASS A, ASTM 2357 & ABAA COMPLIANT, PLUS COORDINATING FLEX FLASH FOR OPENINGS, PENETRATIONS, TERMINATIONS & TRANSITIONS.

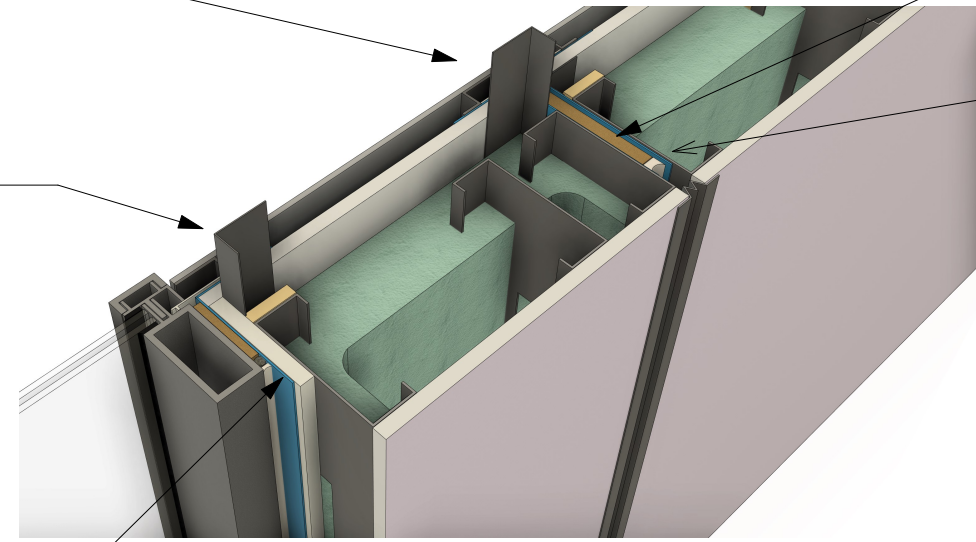
**INTERIOR GWB:** 5/8", UL, APPLIED VERTICALLY, 1 OR 2-LAYER PER FIRE ASSEMBLY AND NFPA 285 ASSEMBLY. (BY OTHERS)



**NO CORNER ANGLE REQD:** ONLY REQD AT CORNER RETURNS.

**L-BACK™ CORNER ANGLE:** 20GA MIN, 1 1/4" BACK LEG TO AVOID TOUCHING STUD FOR THERMAL BREAK. APPLY 2 1/2" FRONT LEG ATOP HORIZONTAL FURRING.

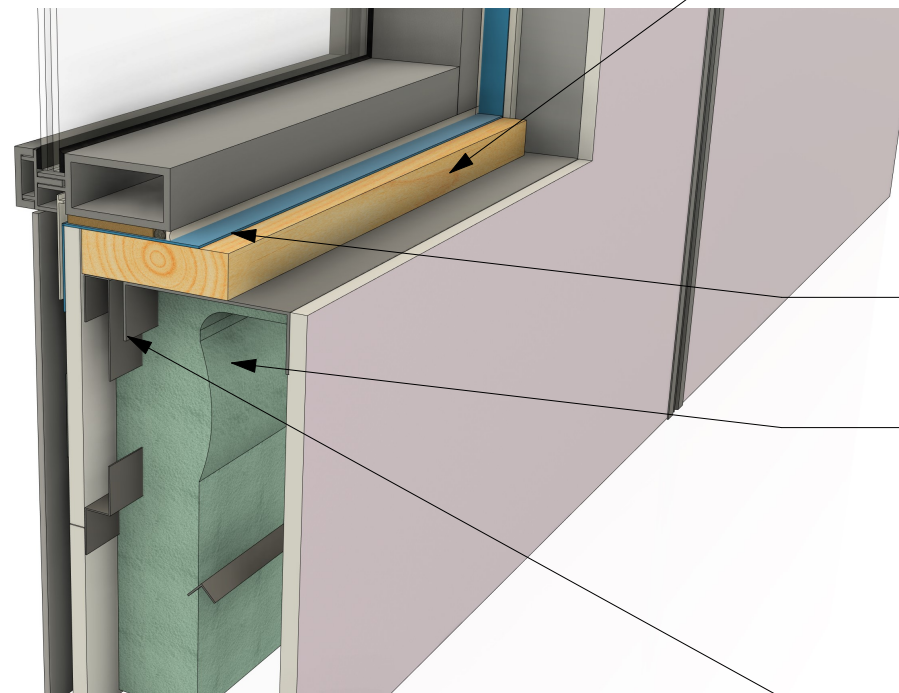
**BLK'NG @ SILL JAMBS & HEAD:** PER NFPA 285, 1 1/2" SOLID, OR 3/4" PLYWD FIRE-RETARDANT EXTERIOR-GRADE WOOD BLOCKING, OR 5/8" EXTERIOR SHEATHING AT JAMBS AND HEAD)



**COMPRESSED MINERAL WOOL VERTICAL JOINT FILL:** 4# DENSITY COMPRESSED 33%. PRE-INSTALLED.

**WRAP PANEL ENDS:** WRAP PERIMETER OF PANEL W/ AWB.

③ **BKL, CUTWAY @ JAMB & PANEL JOINT**  
12" = 1'-0"



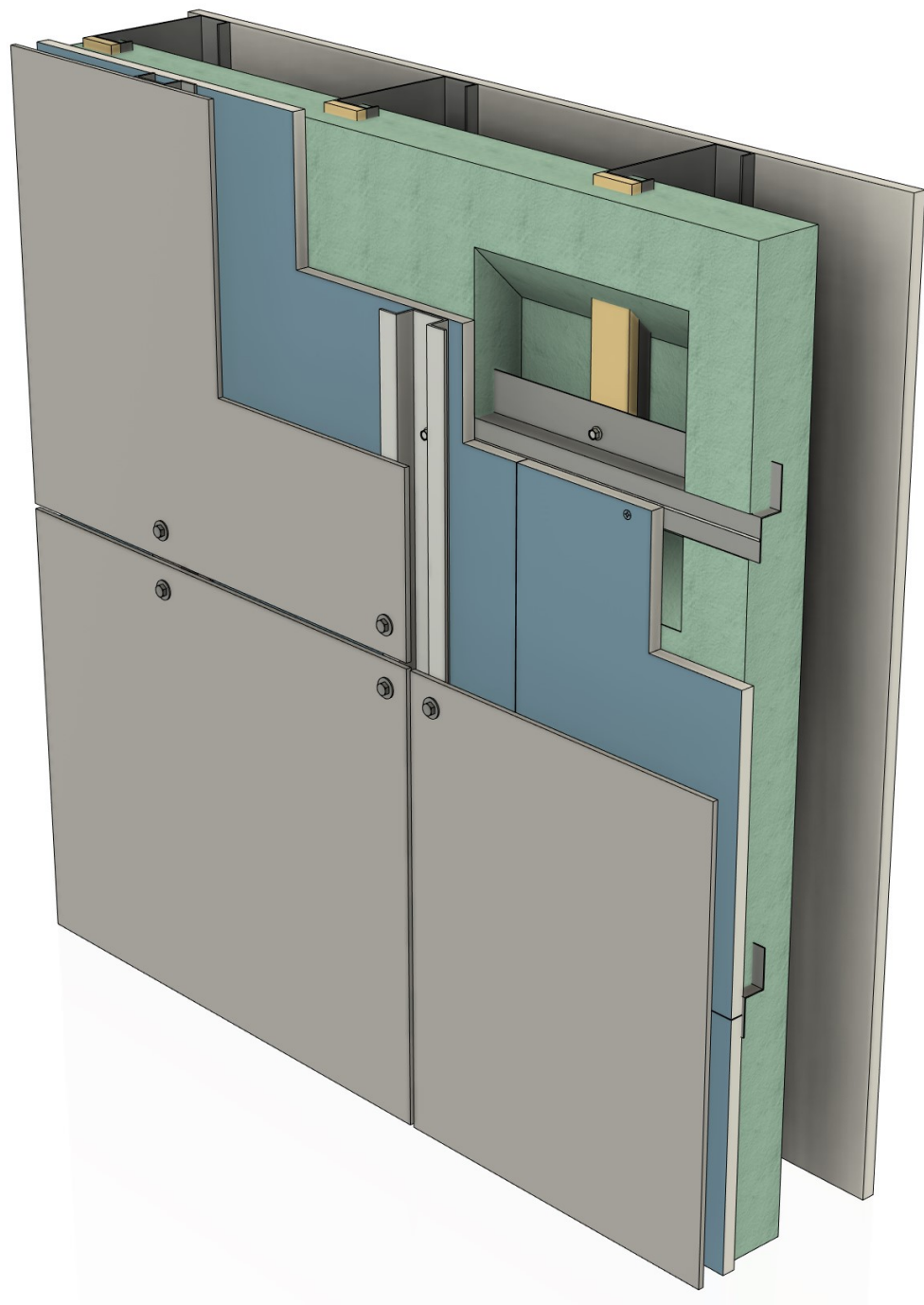
**BLK'NG @ SILL JAMBS & HEAD:** PER NFPA 285, 1 1/2" SOLID OR 3/4" PLYWD (FRX) FIRE-RETARDANT EXTERIOR-GRADE WOOD BLOCKING. (NOTE, 5/8" EXTERIOR SHEATHING ALSO ACCEPTABLE AT JAMBS AND HEAD)

**FLEX FLASH SILL PAN & 6" UP JAMBS.** CONTINUOUS @ CORNERS.

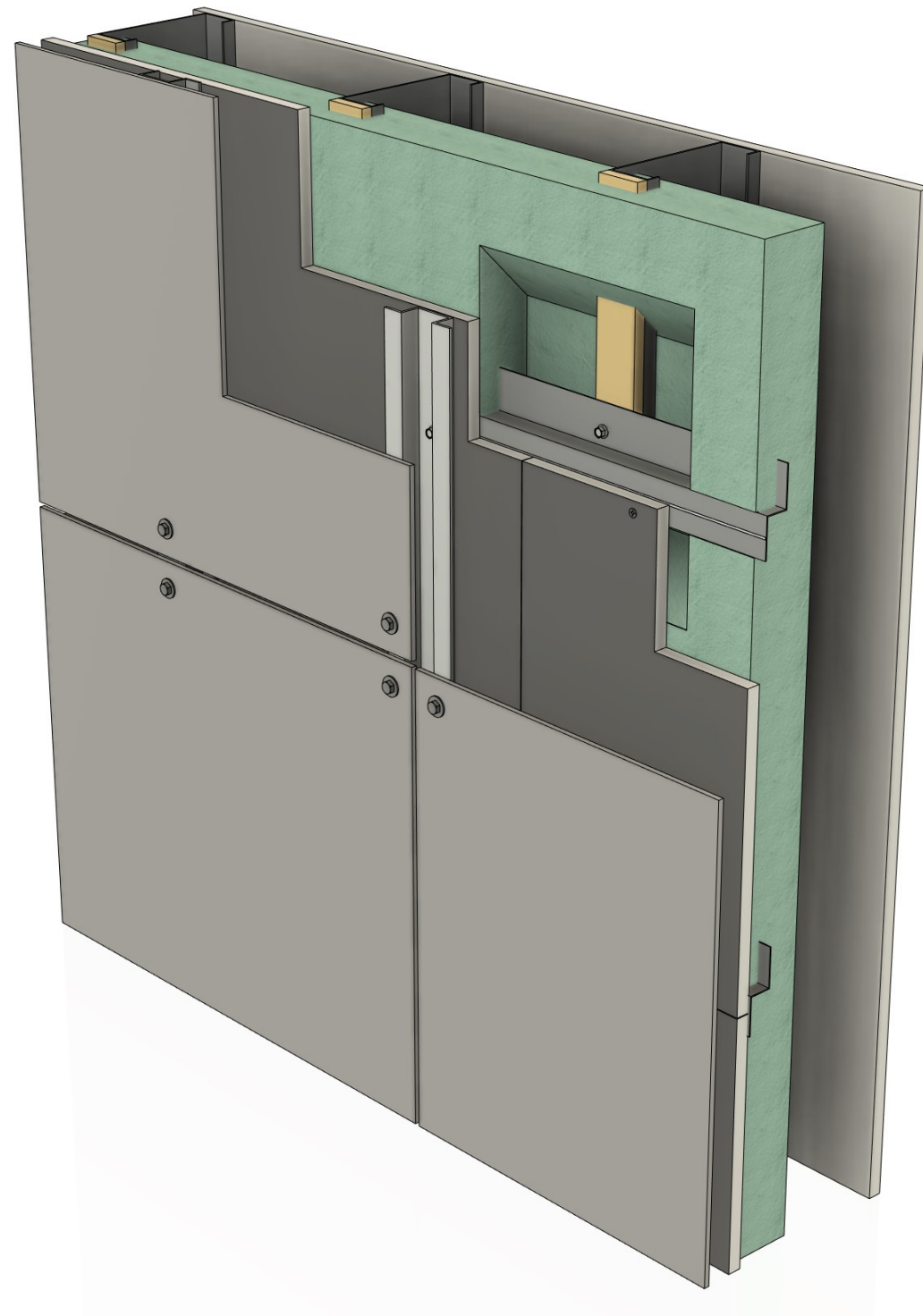
**ccSPF:** 2 3/4" MIN TO 3 5/8" MAX, R24, CONT & TOTAL INSULATION, AIR BARRIER, CLASS 2 VAPOR RETARDER (BI-DIRECTIONAL). PROTECT W/ GWB &/OR 15MIN UL INTUMESCENT COATING.

**J-BACK™ HOR BACK-FURRING:** LOCATE @ TOP & BOTTOM HORIZONTAL EDGES, 1 1/2" X (1"MIN TO 2 1/2" MAX) X 2 1/2" CFMF, GAL, 20GA (MIN), (1) 1 1/4" #12MIN GALV OR STSTL HEXWASHER FASTENER PER STUD. (NOTE, WEB ALIGNS WITH OPENING).

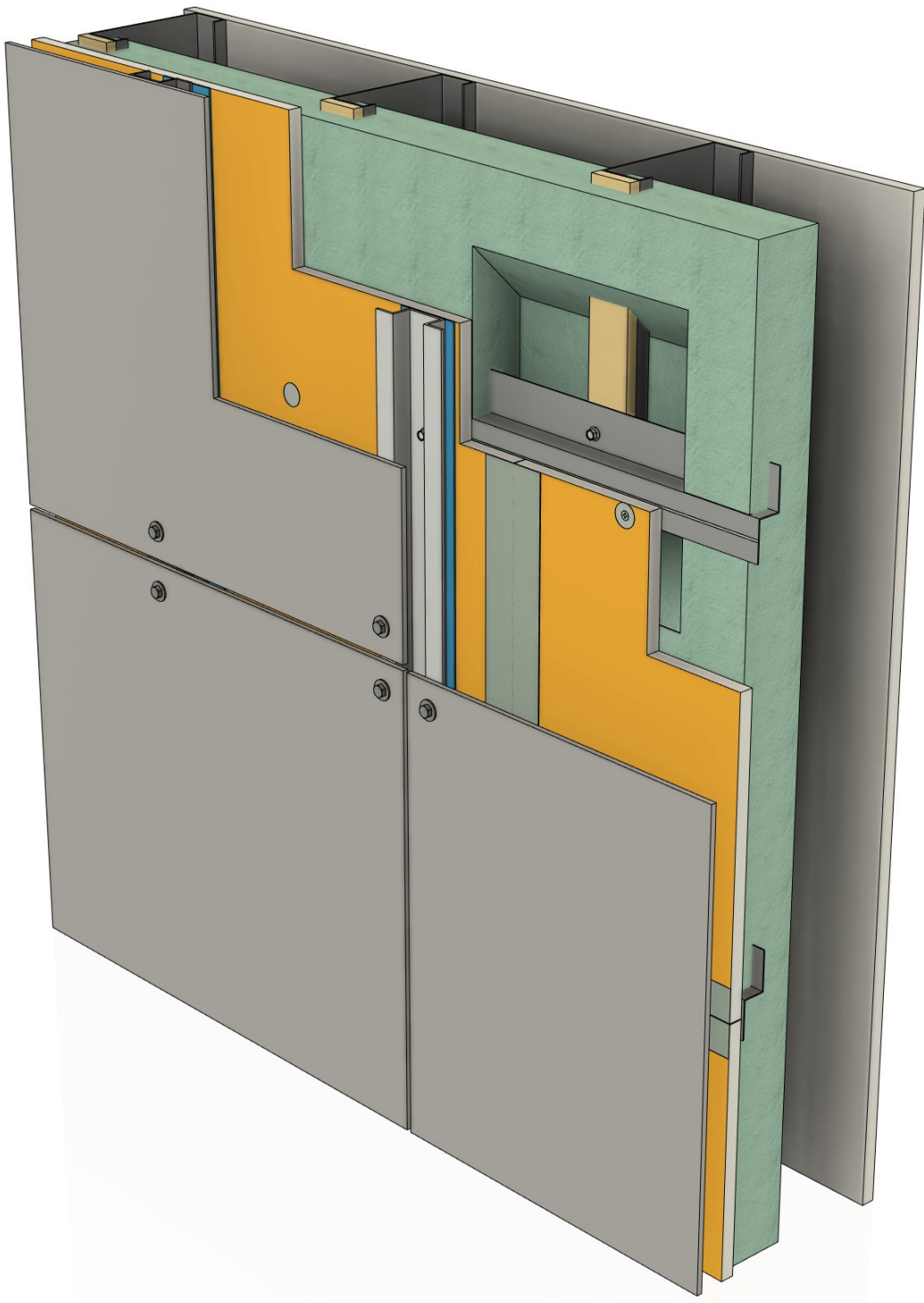
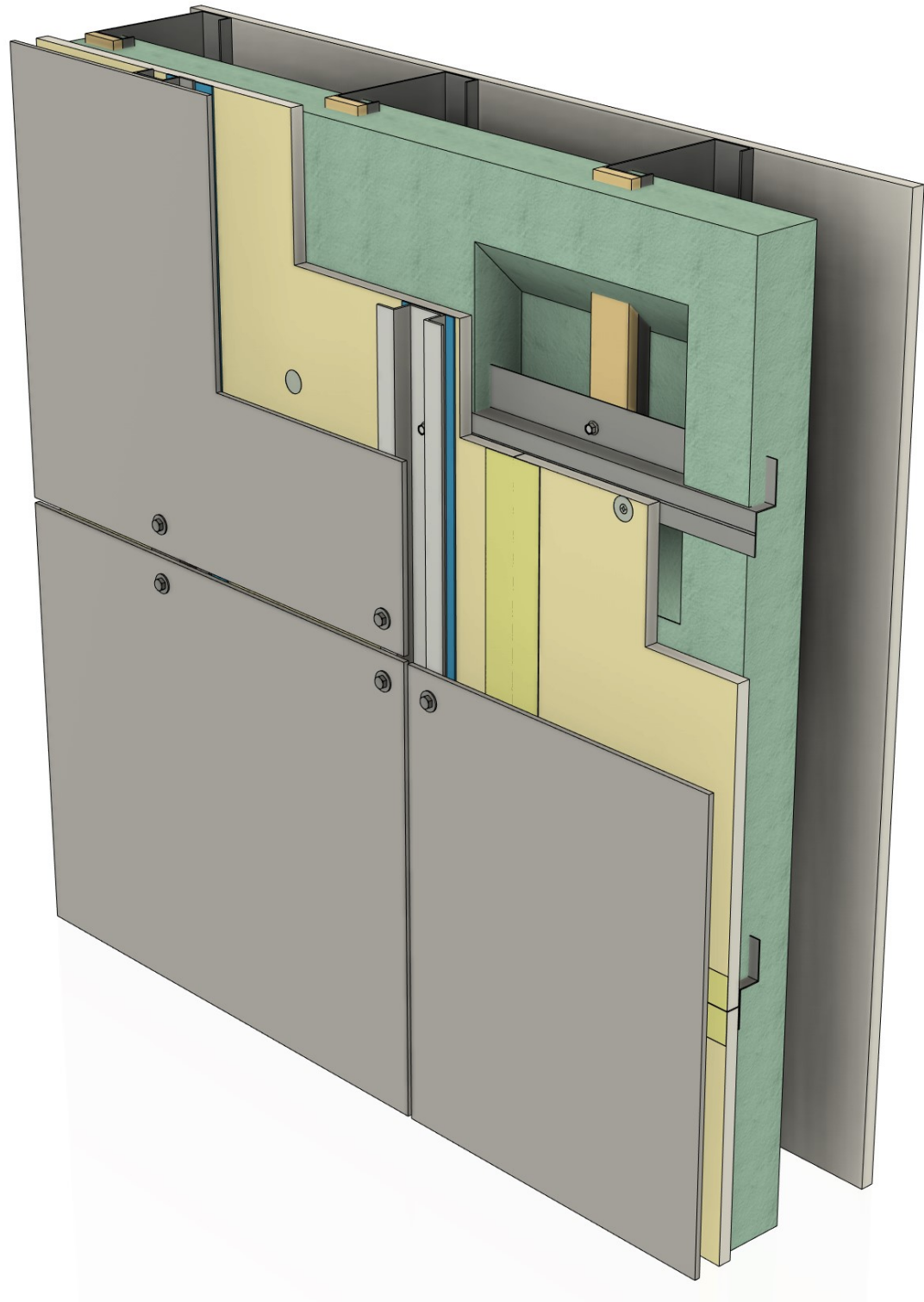
② **BKL, CUTAWAY AT WINDOW SILL**  
12" = 1'-0"



① BKL, FRONT CUTWAY W/ BLUE AWB/VP  
12" = 1'-0"

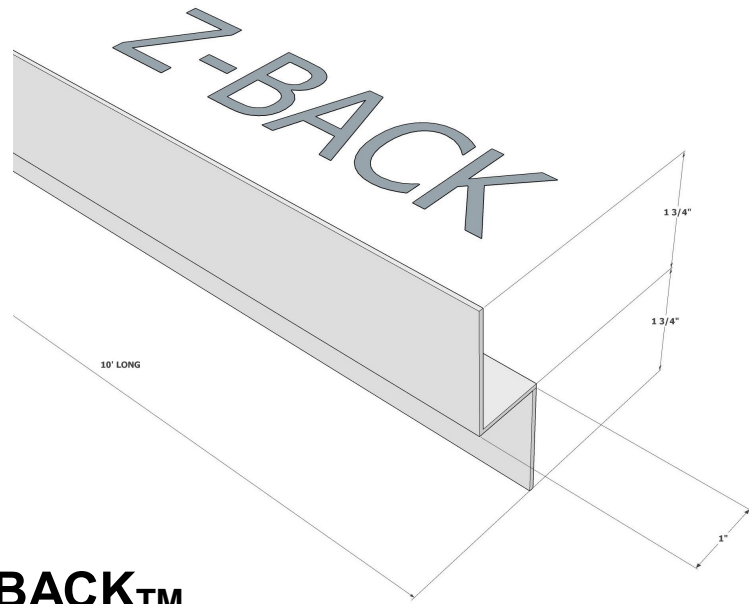


② BKL, FRONT CUTWAY W/ DARK GREY  
AWB/VP  
12" = 1'-0"



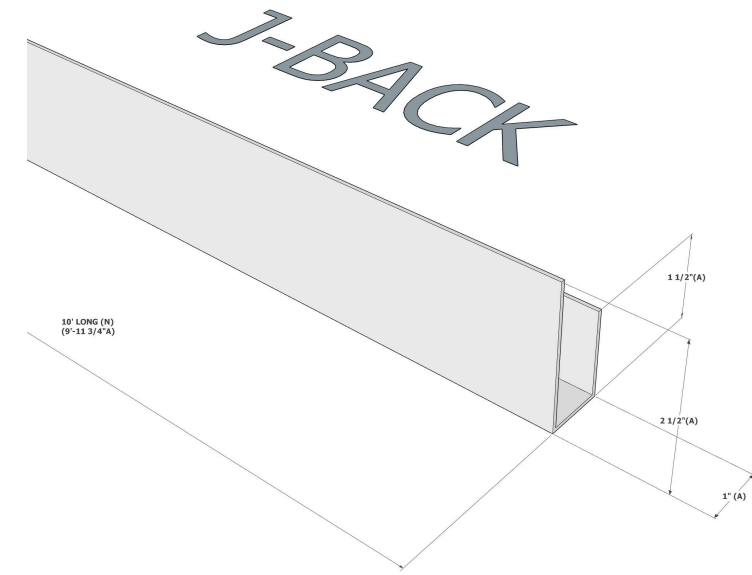
1 BKL, FRONT CUTWAY W/ YELLOW  
AWB/VP  
12" = 1'-0"

2 BKL, FRONT CUTAWAY W/ ORANGE  
AWB/VP  
12" = 1'-0"



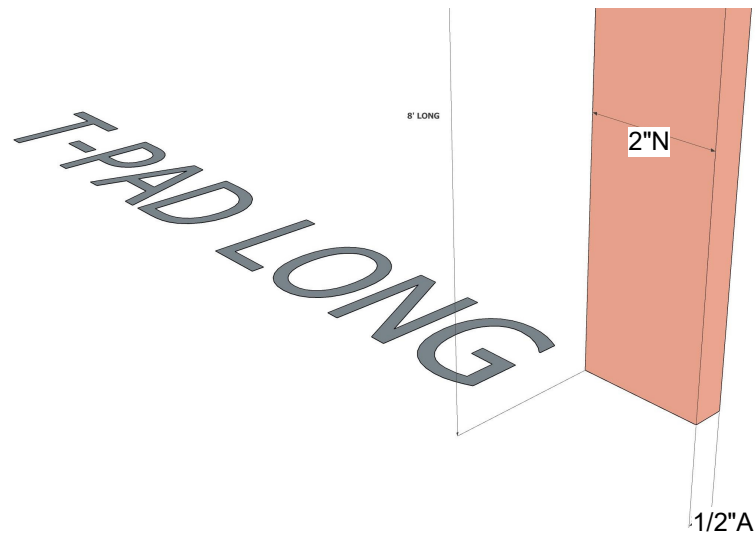
**Z-BACK™**  
TYPICAL HORIZONTAL BACK-FURRING

AVAILABLE FROM CLARKDIETRICH.



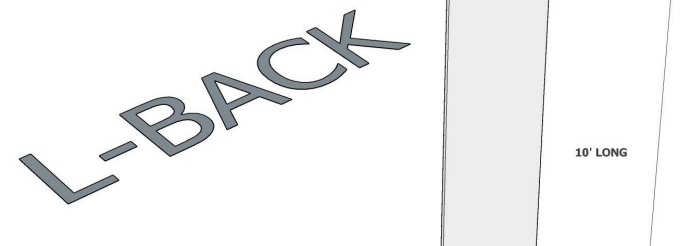
**J-BACK™**  
HORIZONTAL EDGE BACK-FURRING

AVAILABLE FROM CLARKDIETRICH.



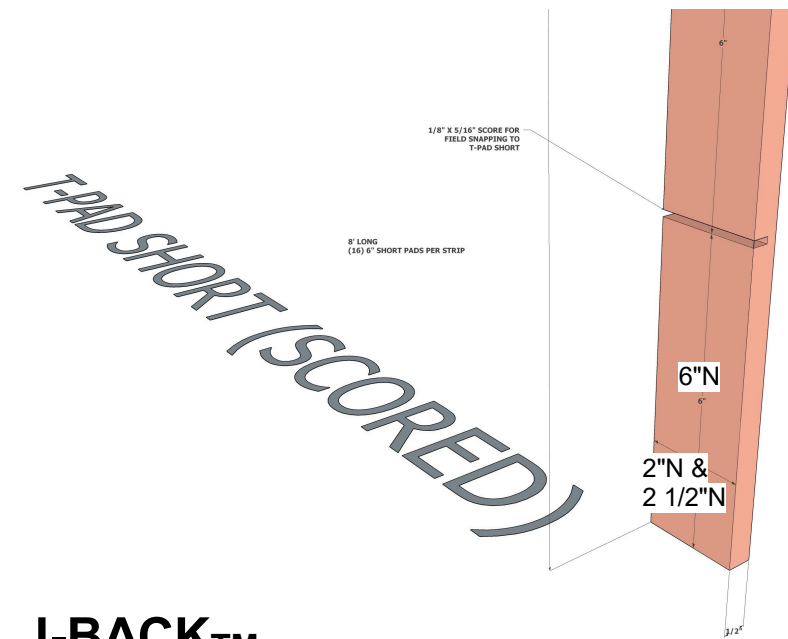
**T-PAD™ LONG**  
HORIZONTAL EDGE BACK-FURRING

HD URETHANE, #500-150, 560PSI, R1.55,  
AVAILABLE FROM ARMATHERM.



**L-BACK™**  
VERTICAL EDGE BACK-FURRING

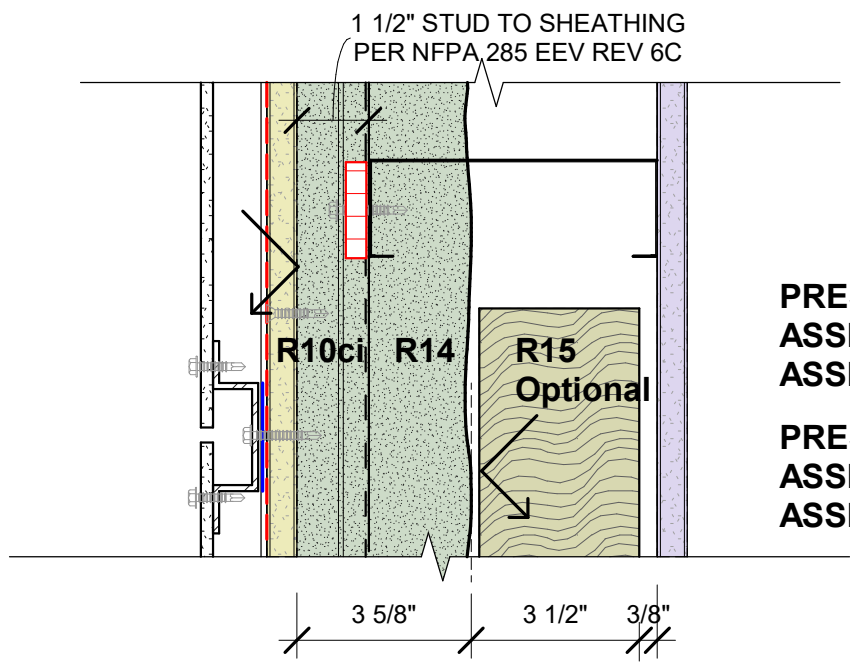
AVAILABLE FROM CLARKDIETRICH.



**J-BACK™**  
HORIZONTAL EDGE BACK-FURRING

HD URETHANE, #500-150, 560PSI, R1.55.  
AVAILABLE FROM ARMATHERM.

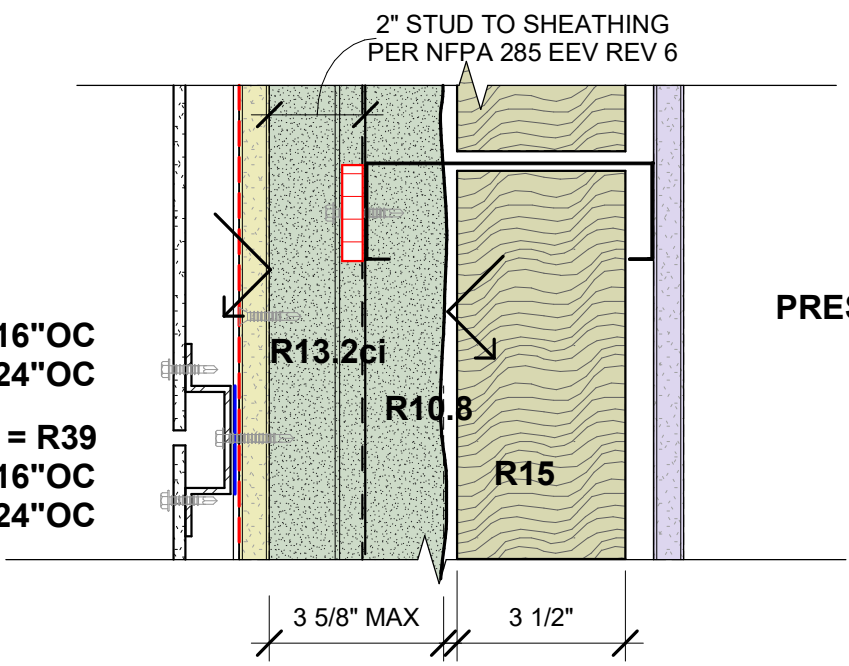




**PRESCRIPTIVE R: R14 + R10ci = R24**  
**ASSEMBLY U: U-0.063 W/ STUDS @ 16"OC**  
**ASSEMBLY U: U-0.054 W/ STUDS @ 24"OC**

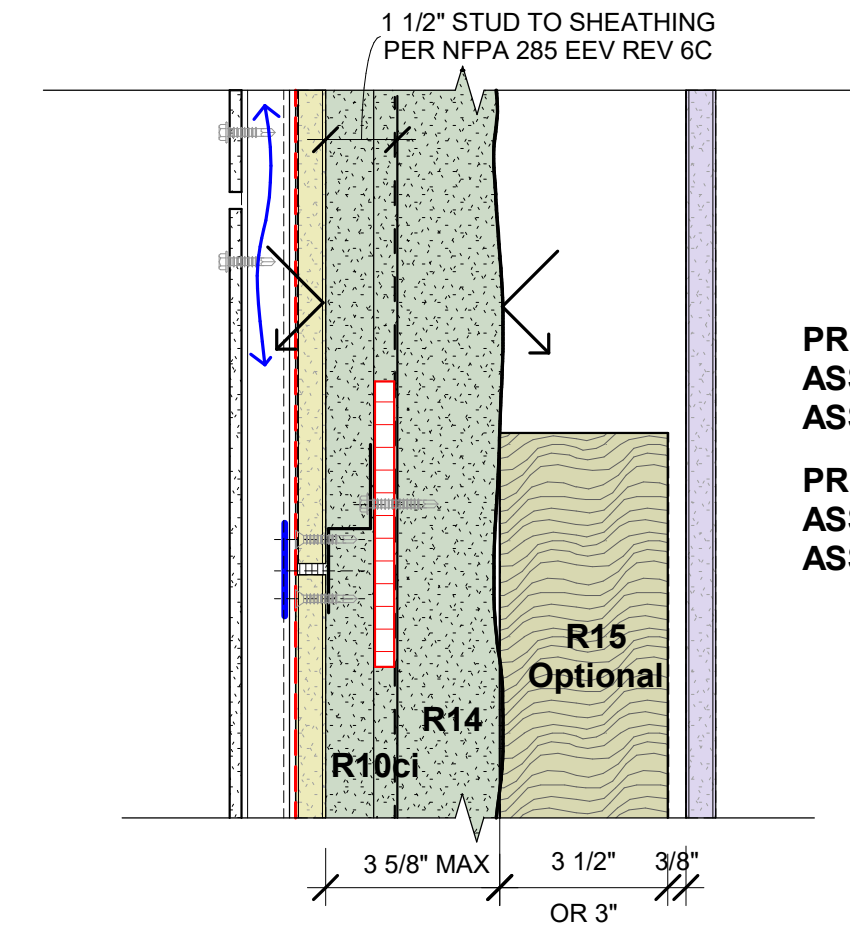
**PRESCRIPTIVE R: R14 + R10ci + R15 = R39**  
**ASSEMBLY U: U-0.050 W/ STUDS @ 16"OC**  
**ASSEMBLY U: U-0.042 W/ STUDS @ 24"OC**

① SIMPLE, BKL, TYP PLAN DETAIL 1 1/2"CI  
3" = 1'-0"



**PRESCRIPTIVE R: R25.8 + R13.2ci = R26.4**

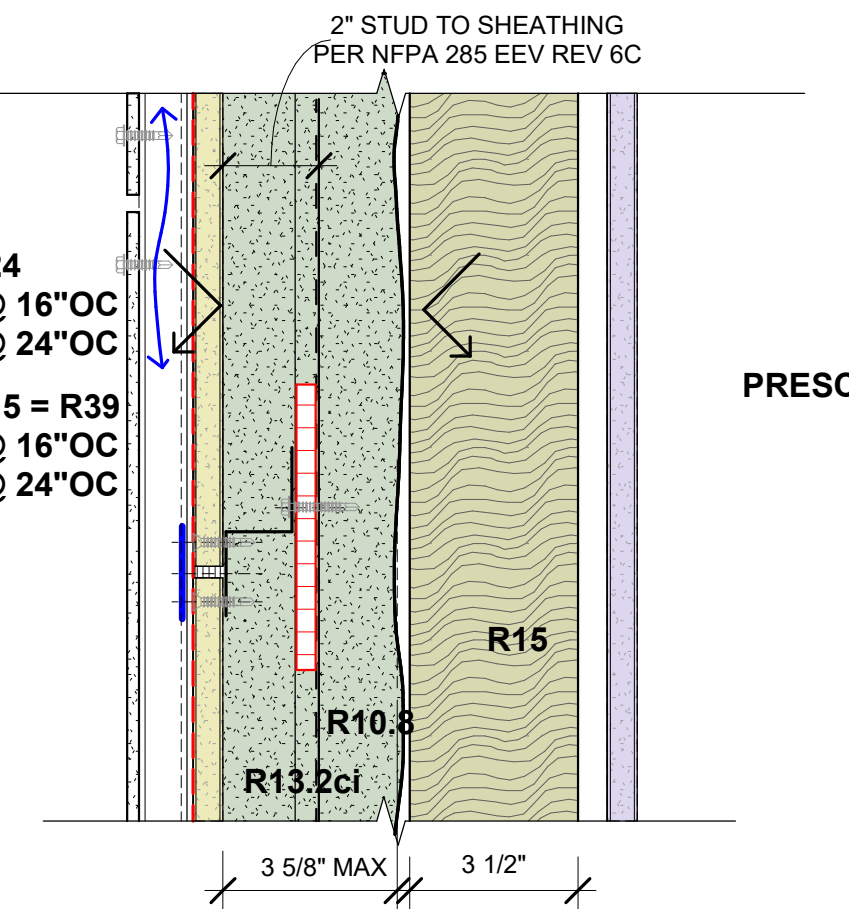
② SIMPLE, BKL, TYP PLAN DETAIL, 2"CI  
3" = 1'-0"



**PRESCRIPTIVE R: R14 + R10ci = R24**  
**ASSEMBLY U: U-0.063 W/ STUDS @ 16"OC**  
**ASSEMBLY U: U-0.054 W/ STUDS @ 24"OC**

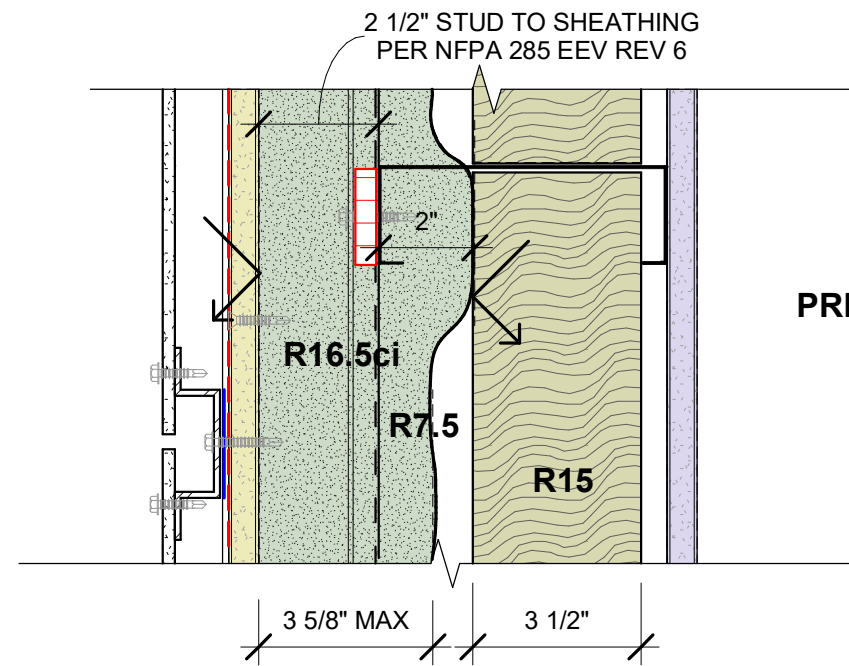
**PRESCRIPTIVE R: R14 + R10ci + R15 = R39**  
**ASSEMBLY U: U-0.050 W/ STUDS @ 16"OC**  
**ASSEMBLY U: U-0.042 W/ STUDS @ 24"OC**

③ SIMPLE, BKL, SECTION 1 1/2"CI  
3" = 1'-0"



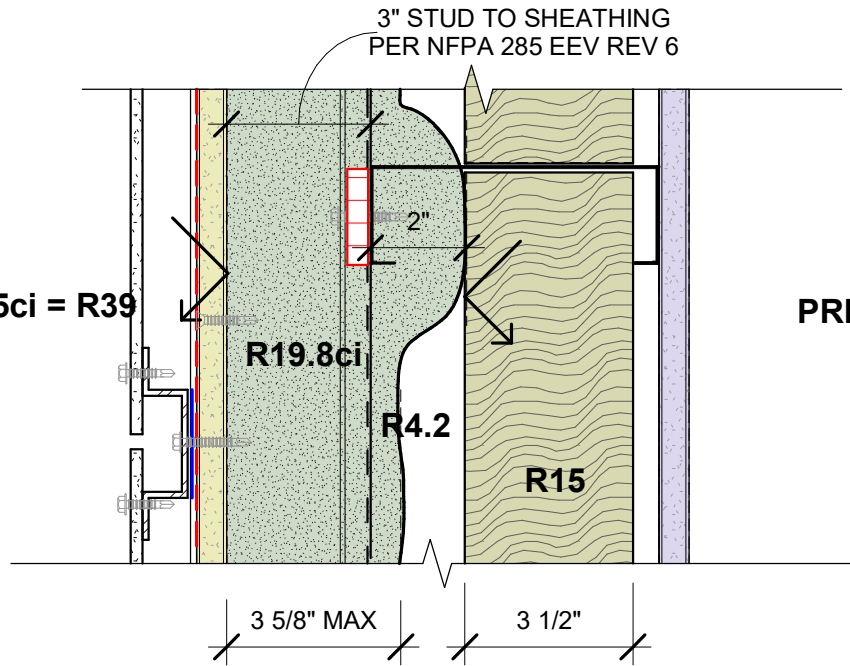
**PRESCRIPTIVE R: R25.8 + R13.2ci = R26.4**

④ SIMPLE, BKL, SECTION 2"CI  
3" = 1'-0"



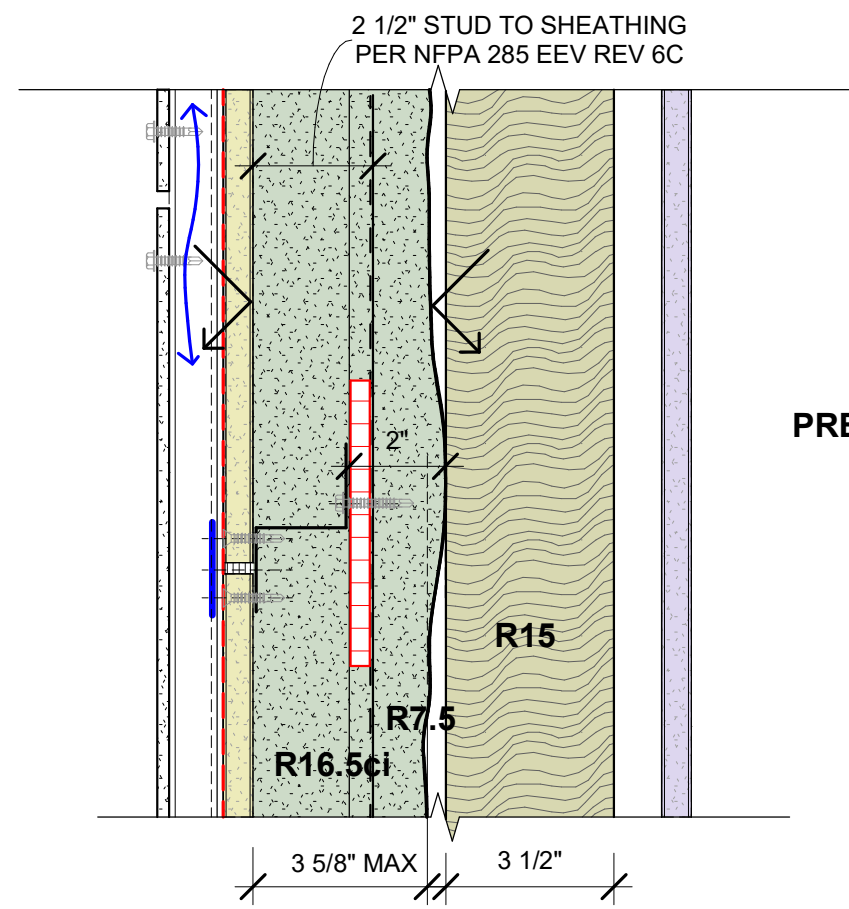
PRESCRIPTIVE R:  $R22.5 + R16.5ci = R39$

1 SIMPLE, BKL, TYP PLAN DETAIL, 2 1/2" CI  
3" = 1'-0"



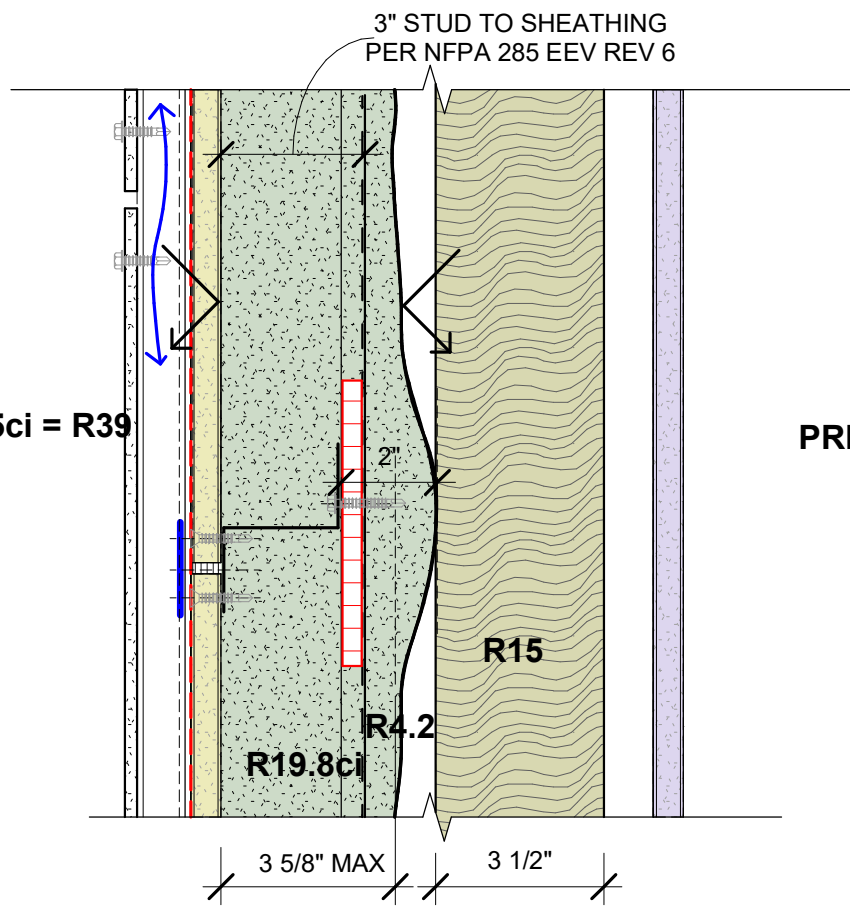
PRESCRIPTIVE R:  $R19.2 + R19.8ci = R39$

2 SIMPLE, BKL, TYP PLAN DETAIL, 3" CI  
3" = 1'-0"



PRESCRIPTIVE R:  $R22.5 + R16.5ci = R39$

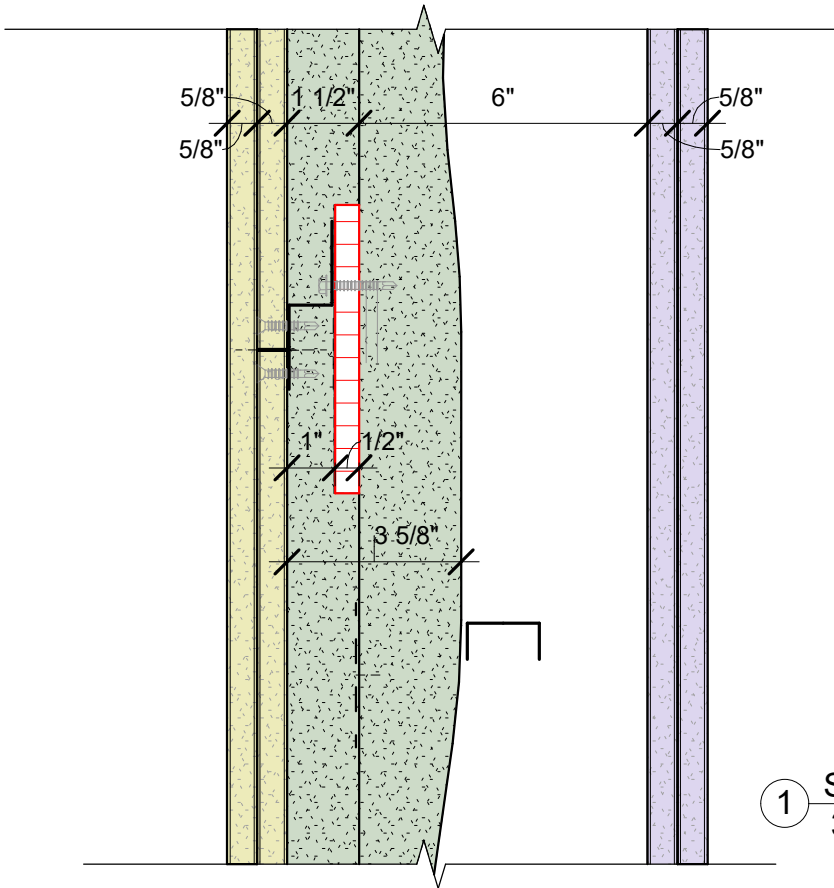
3 SIMPLE, BKL, SECTION 2 1/2" CI  
3" = 1'-0"



PRESCRIPTIVE R:  $R19.2 + R19.8ci = R39$

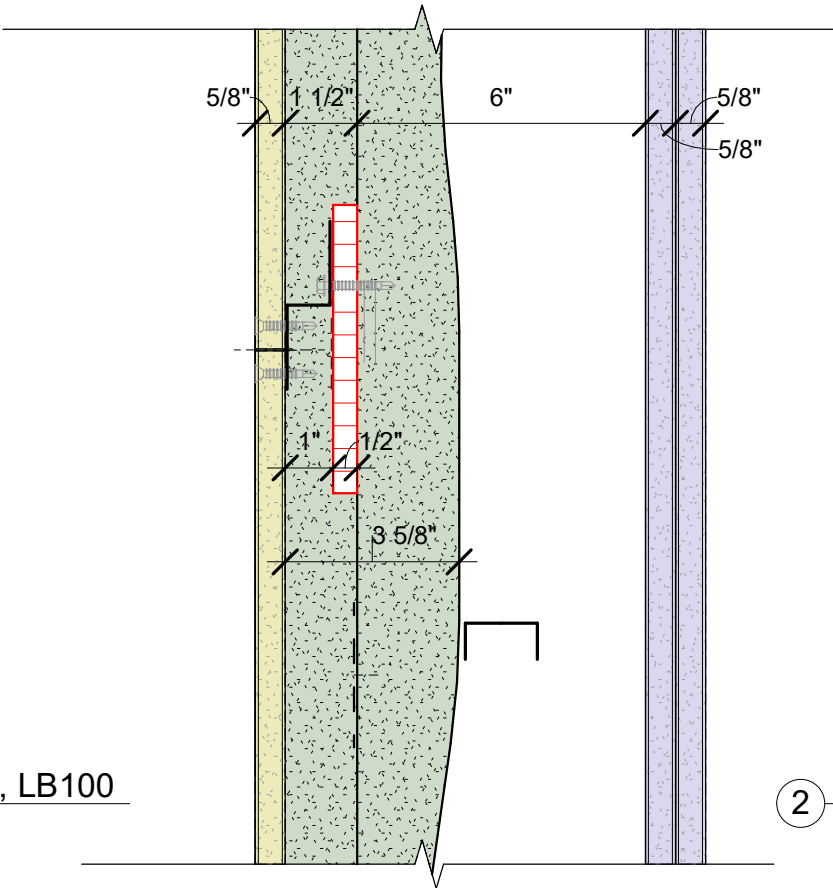
4 SIMPLE, BKL, SECTION 3" CI  
3" = 1'-0"





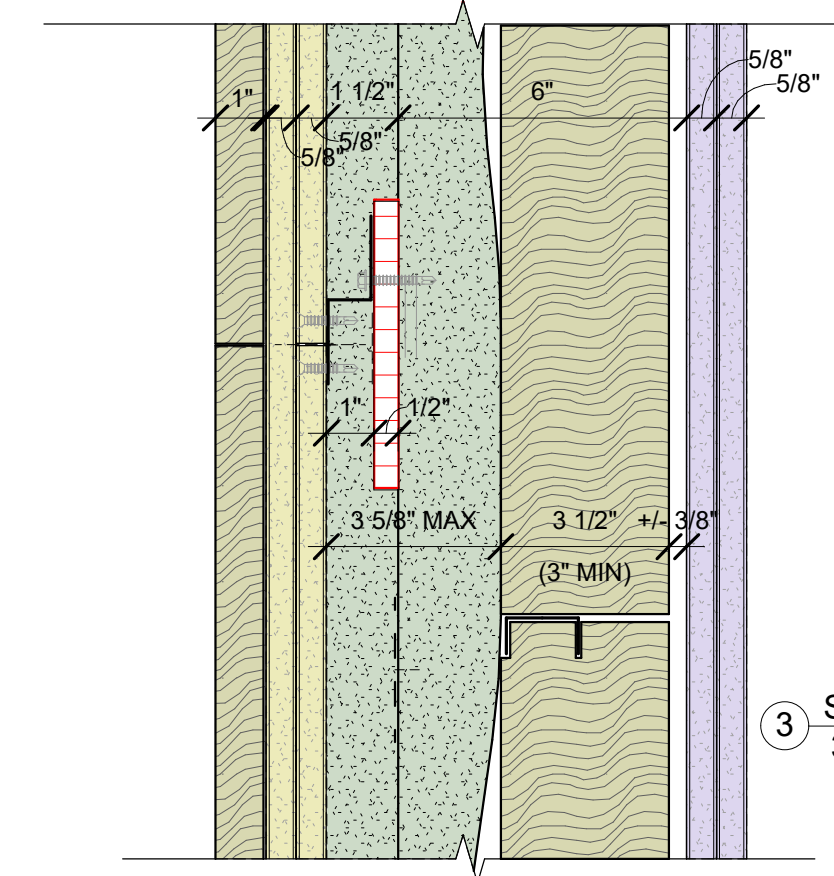
① SIMPLE, 0HR INT, 1HR EXT, LB100  
3" = 1'-0"

1HR-EXT      LOAD BEARING @ 100%      0HR-INT  
#DSS/FWPA 60-01 (INTERTEK)



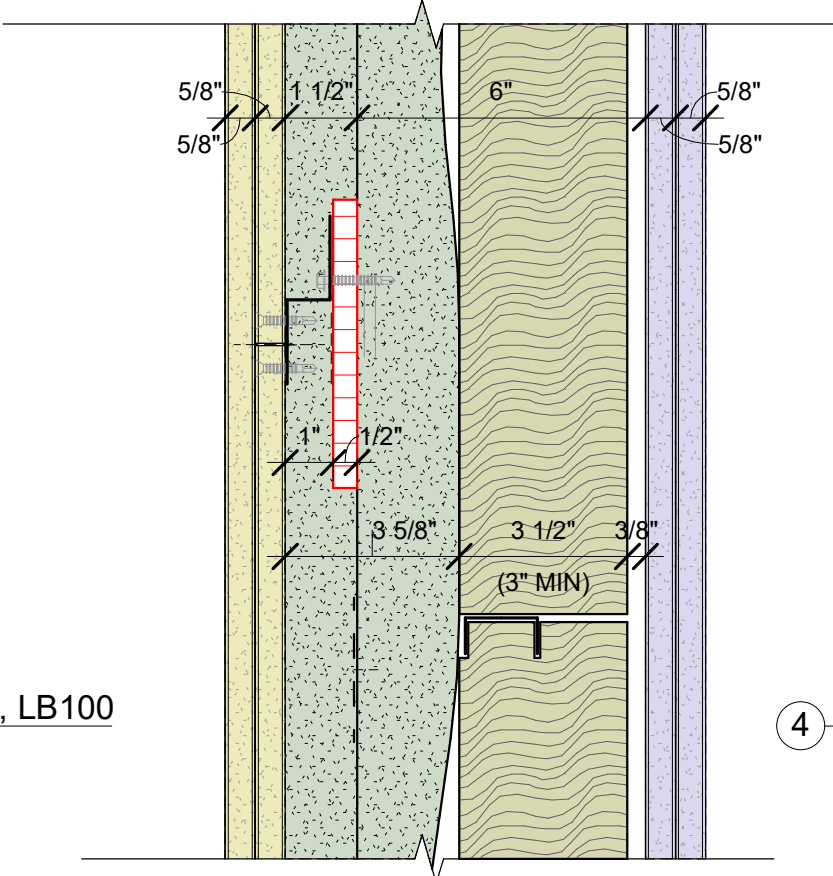
② SIMPLE, 1HR INT, 0HR EXT, LB100  
3" = 1'-0"

0HR-EXT      LOAD BEARING @ 100%      1HR-INT  
#DSS/FWPA 60-02 (INTERTEK)



③ SIMPLE, 0HR INT, 2HR EXT, LB100  
3" = 1'-0"

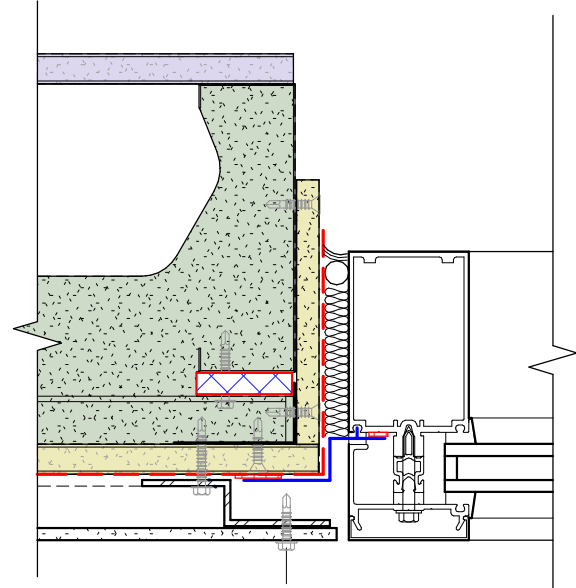
2HR-EXT      LOAD BEARING @ 100%      0HR-INT  
#DSS/FWPA 120-01 (INTERTEK)



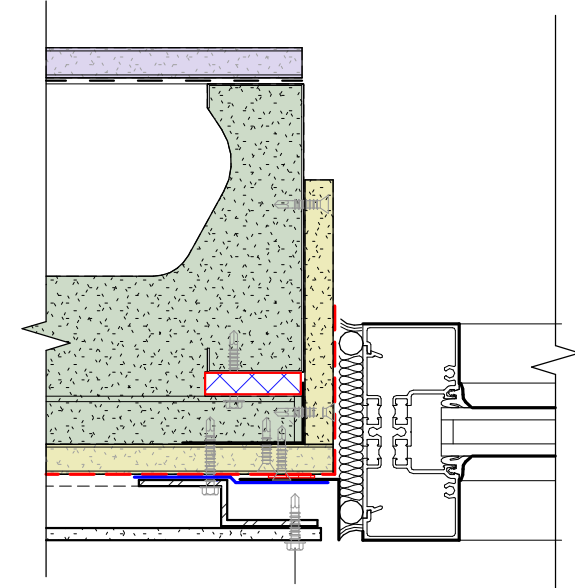
④ SIMPLE, 2HR INT, 0HR EXT, LB80  
3" = 1'-0"

0HR-EXT      LOAD BEARING @ 80%      2HR-INT  
#DSS/FWPA 120-01 (INTERTEK)

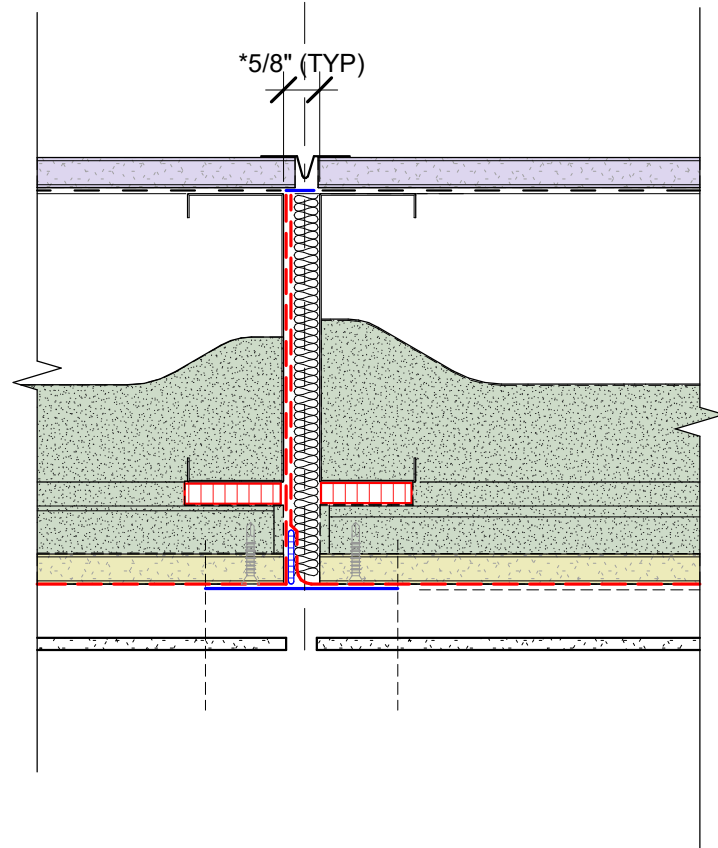




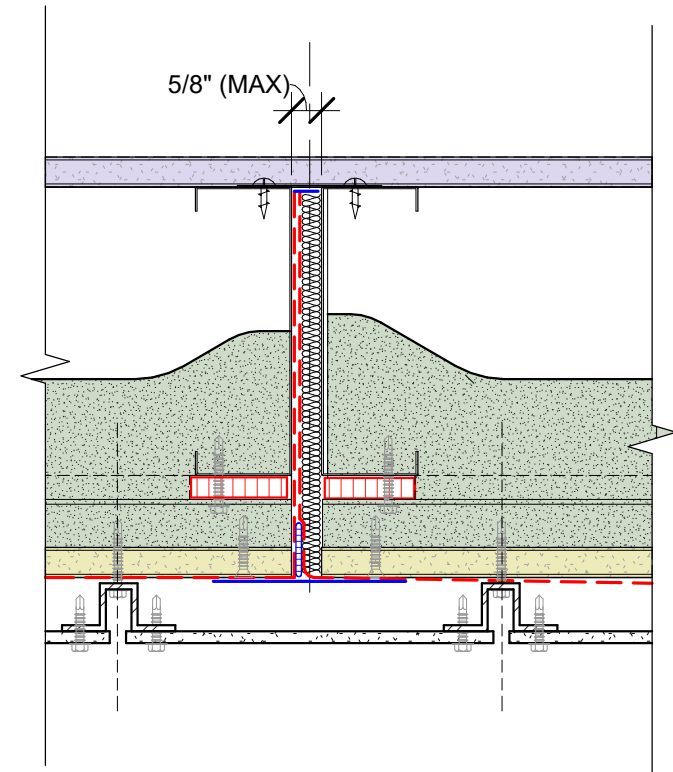
① SIMPLE, BKL, PLAN DETAIL @ JAMB W/  
CURTAINWALL  
3" = 1'-0"



② SIMPLE, BKL, PLAN DETAIL @ JAMB W/  
STOREFRONT  
3" = 1'-0"



③ SIMPLE, BKL, TYPICAL VERT CONTROL  
JT  
3" = 1'-0"



④ SIMPLE, BKL, TYPICAL VERT  
NON-MOVEMENT JT  
3" = 1'-0"